

# GP-1085



## Bacterial Treatment for Complex Aliphatic and Aromatic Chemical Waste Waters

**GP-1085** is a specially formulated microbial product designed to provide a selected culture able to biodegrade a wide range of complex aliphatic and aromatic chemicals in aerobic biological waste water treatment systems.



The **GP-1085** formulation contains a range of 13 carefully selected bacterial strains together with surfactants carried on a cereal base.

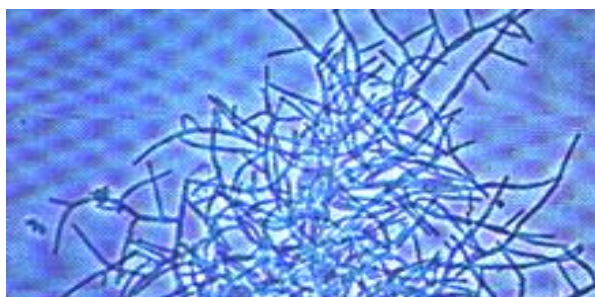
These bacteria have been selected, adapted, grown in pure culture, harvested and preserved by freeze-drying before being blended in the final formulation.

To assist in the initial stages of biodegradation, low levels of surfactants are incorporated into the formulation to supplement the bacteria's natural production.

### Benefits of GP1085

- Ensure the efficient, rapid and cost effective establishment of a biomass in aerobic waste water treatment plants receiving effluents from the chemical and petrochemical industries.
- Prevent many of the problems associated with toxic shock.
- Improve colour removal from dyeing, printing and textile works.
- Accelerate the processes of biodegradation to improve treatment efficiency and the quality of the final effluent. By using the selected strains of bacteria in the GP-1085 formulation it is possible to increase the performance of the biomass enabling greater hydraulic and organic loadings to be adequately treated within the same facility.

We take great pride in offering green, environmentally sustainable chemical solutions and as such all the products in the **GP** range are produced using **environmentally friendly** methods and are formulated to be **fully biodegradable**.



**For more information please contact us directly on**

**08456 432 900**

**Fully  
Biodegradable  
and  
Environmentally  
Friendly**

### **TECHNICAL SUPPORT**

**We are happy to offer on-site technical support during all stages of production. Technical support includes on-site testing and results.**

### **PRODUCT SAFETY**

**All our products are thoroughly researched and tested. All products are also COSHH registered and come complete with delivery.**