

GP-1060



Bacterial Treatment for Waste Waters dealing with Fats, Oils and Greases of Animal Origins

GP - 1060 is a specially formulated microbial product designed to provide a selected culture of the most efficient bacteria for the establishment and enhancement of the biomass in aerobic biological waste water treatment plants, treating waste water containing fats, oils and grease (FOG) of animal origin.



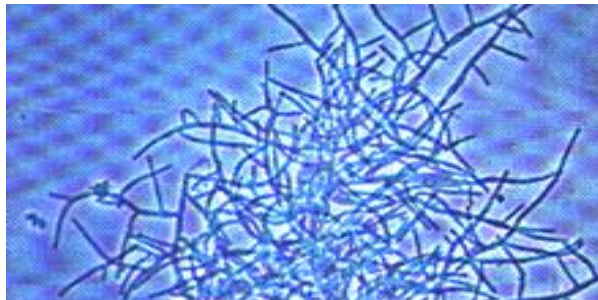
GP-1060 contains 11 strains of bacteria which of two different metabolic types. Some are facultative anaerobes whilst the predominate strains are obligate aerobes. In both cases the strains that have been selected and developed for incorporation into the product are of a highly competitive nature and are therefore able to establish a dominant position within the biomass

Free enzymes and surfactants are also included in the product. Their role is to assist in the creation of the correct environment for the obligate aerobic bacteria.

Benefits of GP 1060

- Rapidly establish a more effective biomass with a higher specificity for animal FOG
- Prevents problems frequently associated with seeding using imported sludges.
- Reduces operational problems and odours. By minimising the amount of animal FOG.
- Reduce BOD / COD levels in the final effluent.
- Increase the efficiency of aeration systems by improving the oxygen transfer rate.
- The efficient degradation of FOG greatly reduces their influence on surface tension increasing the rate at which oxygen may be transferred from the air into the aqueous phase of the activated sludge.
- Reduce Sludge dewatering and handling costs by improving the biological sludge.
- Increases the dry solids content of sludge cakes and can reduce the consumption of chemical dewatering aids.

We take great pride in offering green, environmentally sustainable chemical solutions and as such all the products in the **GP** range are produced using **environmentally friendly** methods and are formulated to be **fully biodegradable**.



For more information please contact us directly on

08456 432 900

**Fully
Biodegradable
and
Environmentally
Friendly**

**TECHNICAL
SUPPORT**

**We are happy to
offer on-site
technical support
during all stages of
production.
Technical support
includes on-site
testing and results.**

PRODUCT SAFETY

**All our products are
thoroughly
researched and
tested. All products
are also COSHH
registered and
come complete with
delivery.**