

GP-1055



Bacterial Treatment for the establishment and enhancement of Biomass in Waste Waters

GP-1055 is a specially formulated microbial product designed to provide a selected culture of the most efficient bacteria for the establishment and enhancement of the biomass in municipal and industrial aerobic waste water treatment plants



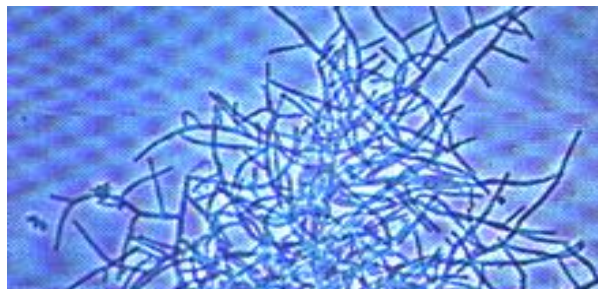
The **GP-1055** formulation contains a wide range bacterial strains, including members of the genera *Bacillus*, *Pseudomonas* and *Streptomyces*. These bacteria have been selected, adapted, grown in pure culture, harvested and preserved by freeze-drying, before being blended into the final formulation.

In addition to the bacteria the product also contains; amylases, cellulases and lipases as free enzymes. These are important in the initial growth phase of the bacteria.

Benefits of GP-1055

- Facilitate rapid and effective biological commissioning of aerobic water and waste water treatment plants. This provides a cost effective and more efficient alternative to the conventional approach of importing sludge from other treatment plants (with all its associated problems of handling, transportation, acclimatisation, composition and cost).
- Reduce BOD/COD values of the final effluent, by improving the biodegradation efficiency per unit volume of the aerobic treatment plant in situations where the biomass is unable to meet the required level of effectiveness.
- Reduce operating and sludge handling costs, by promoting the development and maintenance of biological sludges with good settlement and dewatering characteristics.

We take great pride in offering green, environmentally sustainable chemical solutions and as such all the products in the **GP** range are produced using **environmentally friendly** methods and are formulated to be **fully biodegradable**.



For more information please contact us directly on

08456 432 900

**Fully
Biodegradable
and
Environmentally
Friendly**

TECHNICAL SUPPORT

We are happy to offer on-site technical support during all stages of production. Technical support includes on-site testing and results.

PRODUCT SAFETY

All our products are thoroughly researched and tested. All products are also COSHH registered and come complete with delivery.